

Picanol PAT Main solenoid valves



Technology Reference

1. Work medium: dry and no oil pressed air
2. Work press: $\leq 0.7\text{MPa}$
3. Work condition: $-20 \sim +40^\circ\text{C}$

DLZFJ-0100 VALVE ASSEMBLY

4. Delicacy: Open time $\leq 8\text{ms}$ Close time $\leq 21\text{ms}$
5. Insulated resistance: $> 20\text{M}$
6. Work life: $>$

Picanol PAT Main solenoid valves



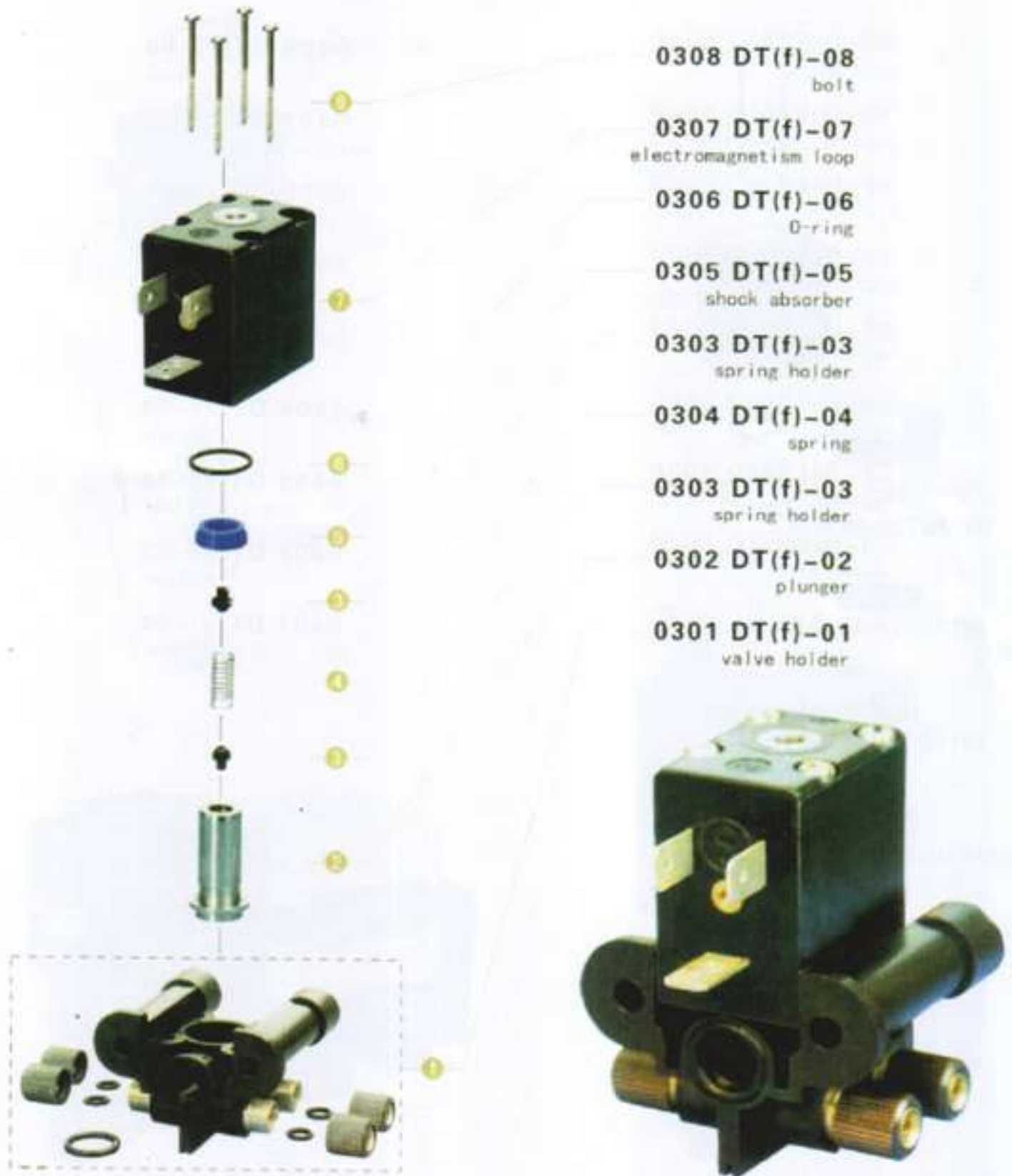
Technology Reference

1. Work medium: dry and no oil pressed air
2. Work press: ≤ 0.7 MPa
3. Work condition: $-20 \sim +40^{\circ}\text{C}$

DLZFJ-0200 VALVE ASSEMBLY

4. Delicacy: Open time ≤ 8 ms Close time ≤ 2 ms
5. Insulated resistance: $> 20\text{M}$
6. Work life: $>$

Picanol DELTA/OMNT Relay solenoid valves



Technology Reference

1. Work medium: dry and no oil pressed air
2. Work press: ≤ 0.7 MPa
3. Work condition: $-20 \sim +40^{\circ}\text{C}$

4. Delicacy: Open time $\leq 8\text{ms}$ Close time $\leq 21\text{ms}$
5. Insulated resistance: $>20\text{M}$
6. Work life:

DLZFJ-0300 VALVE ASSEMBLY

Picanol DELTA/OMNT Relay solenoid valves



DLZFJ-0400 VALVE ASSEMBLY

Technology Reference

1. Work medium: dry and no oil pressed air
2. Work press: $\leq 0.7\text{MPa}$
3. Work condition: $-20 \sim +40^\circ\text{C}$

4. Delicacy: Open time $\leq 8\text{ms}$ Close time $\leq 21\text{ms}$
5. Insulated resistance: $> 20\text{M}$
6. Work life:

Picanol OMNT-PLUS-3 Relay solenoid valves



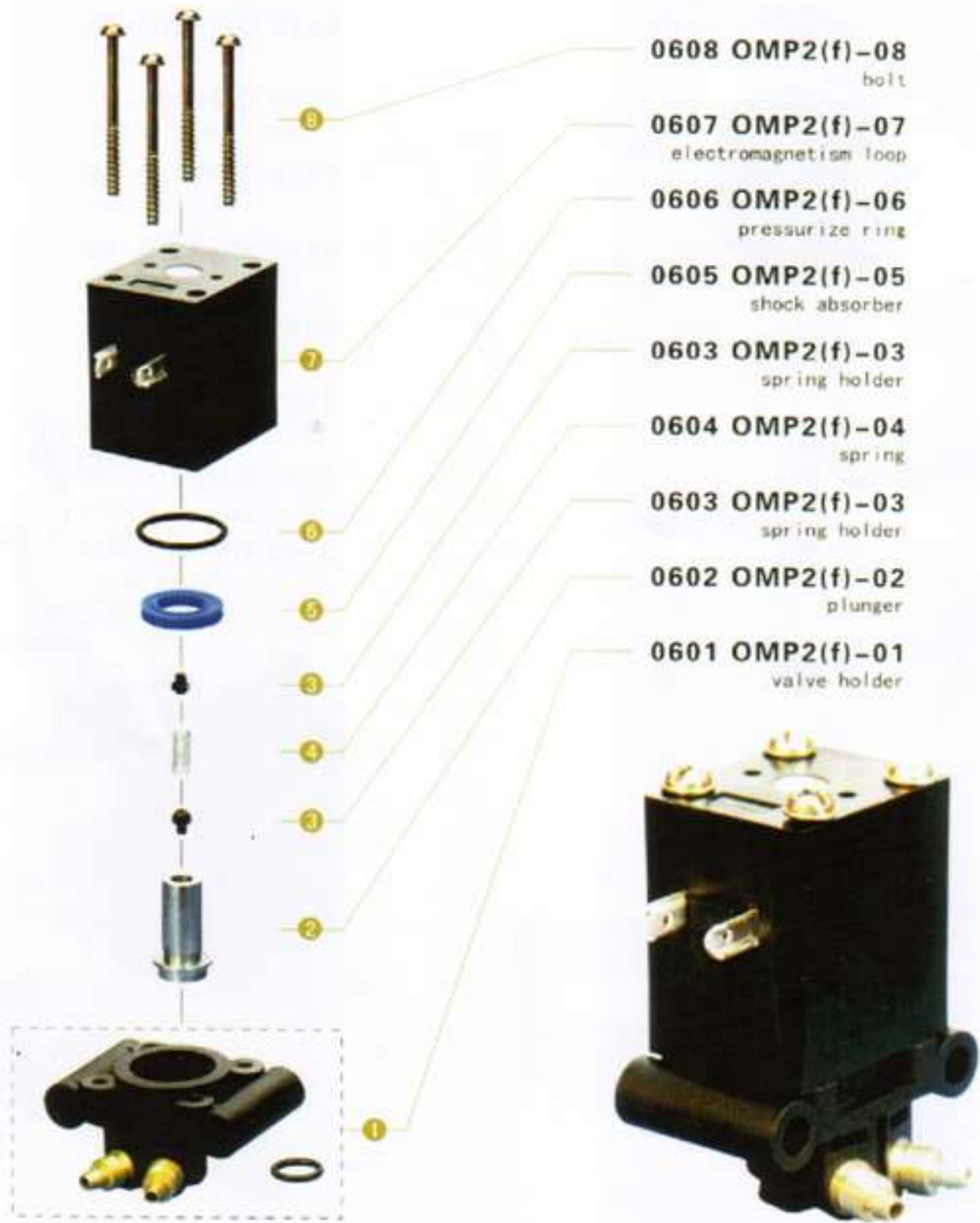
Technology Reference

1. Work medium: dry and no oil pressed air
2. Work press: ≤ 0.7 MPa
3. Work condition: $-20 \sim +40^{\circ}\text{C}$

4. Delicacy: Open time ≤ 8 ms Close time ≤ 2 ms
5. Insulated resistance: $> 20\text{M}$
6. Work life: $>$

DLZFJ-0500 VALVE ASSEMBLY

Picanol OMNI-PLUS-2 Relay solenoid valves

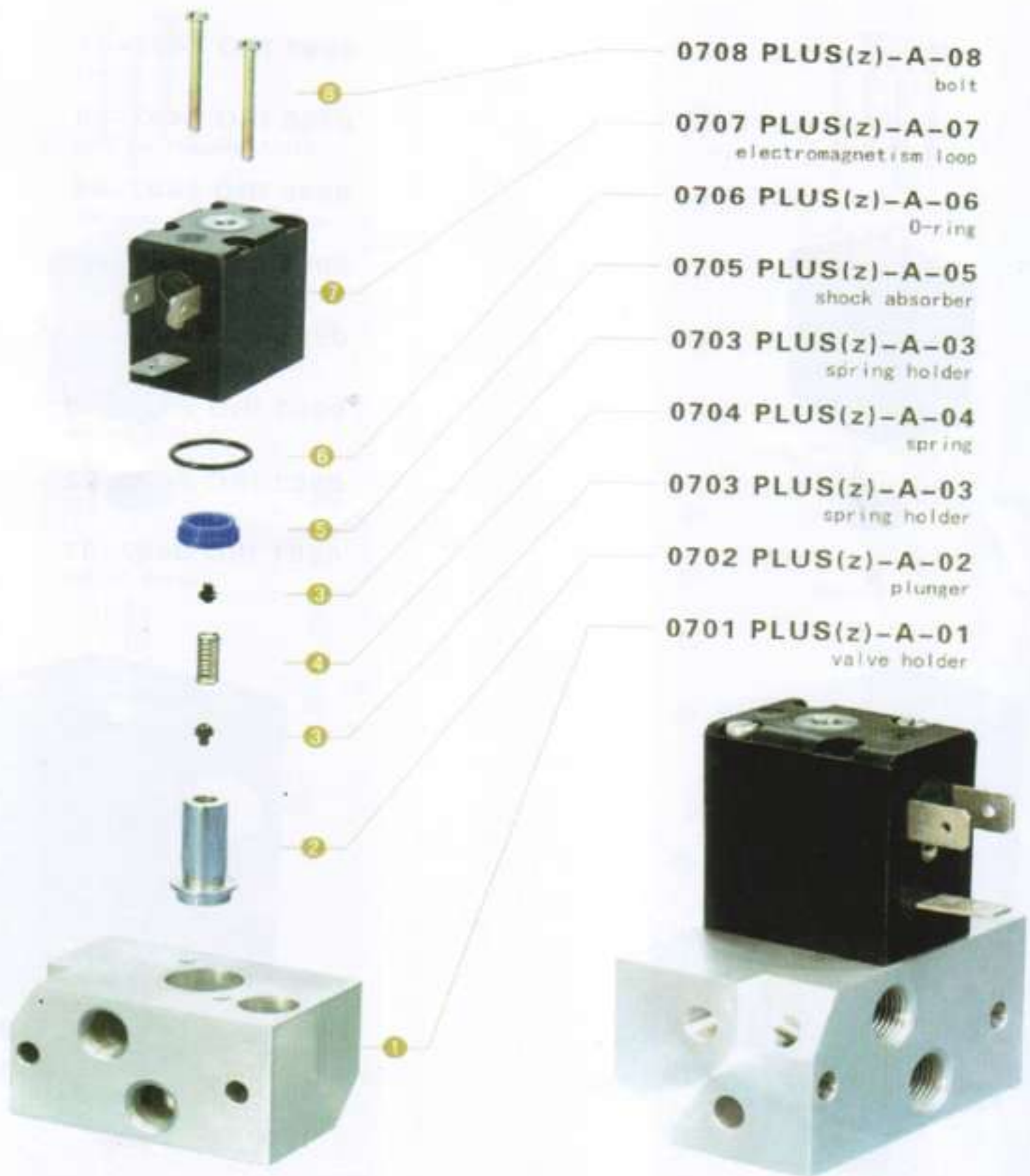


Technology Reference

1. Work medium: dry and no oil pressed air
2. Work press: $\leq 0.7\text{MPa}$
3. Work condition: $-20 \sim +40^\circ\text{C}$

4. Delicacy: Open time $\leq 6\text{ms}$ Close time $\leq 21\text{ms}$
5. Insulated resistance: $> 20\text{M}$
6. Work life:

Picanol OMNI-PLUS-A Main solenoid valves

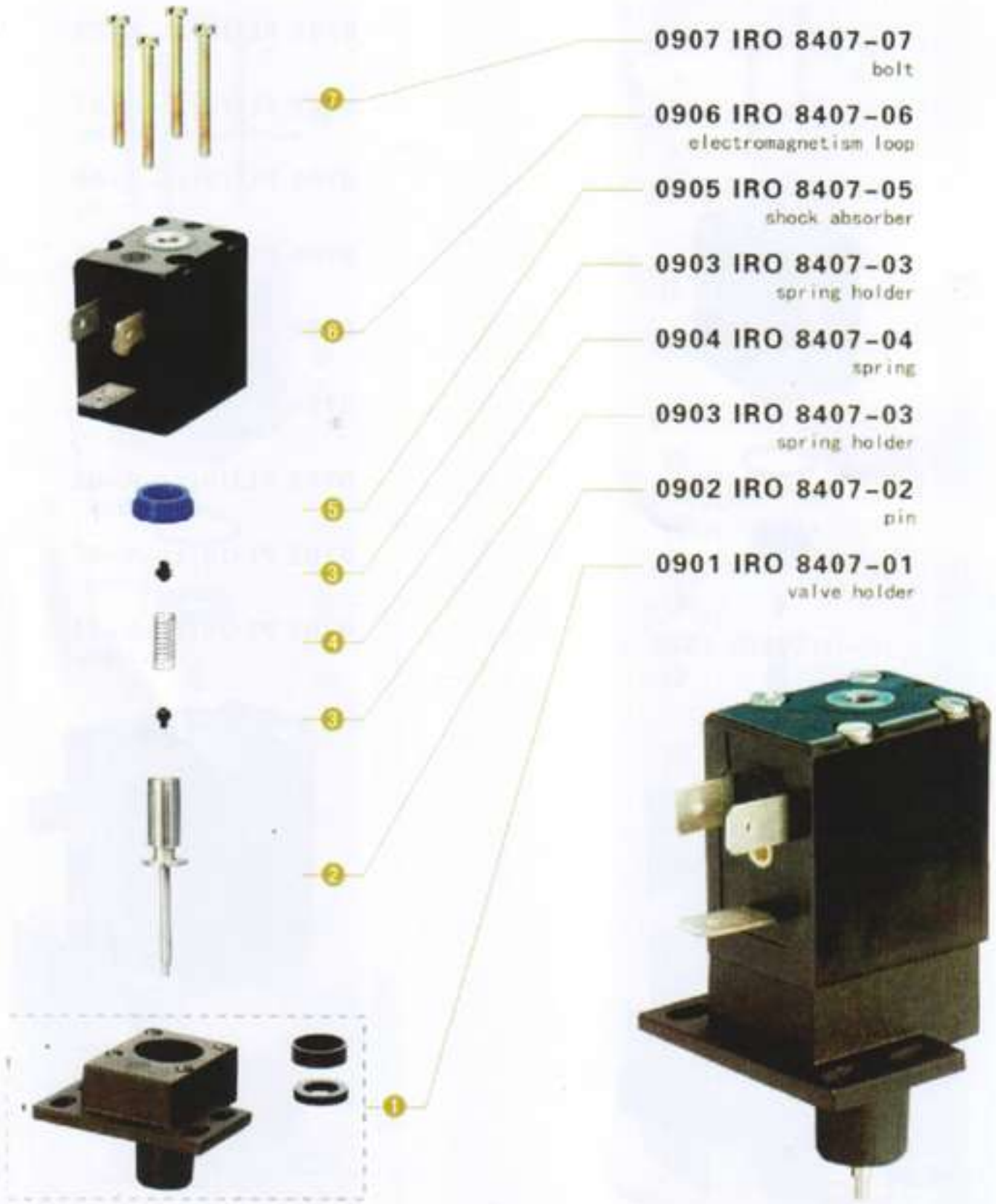


Technology Reference

1. Work medium: dry and no oil pressed air
2. Work press: $\leq 0.7\text{MPa}$
3. Work condition: $-20 \sim +40^\circ\text{C}$

4. Delicacy: Open time $\leq 8\text{ms}$ Close time $\leq 21\text{ms}$
5. Insulated resistance: $> 20\text{M}$
6. Work life: $> 10\text{亿次}$

Picanol PAT IRO 8407 weft storage pin



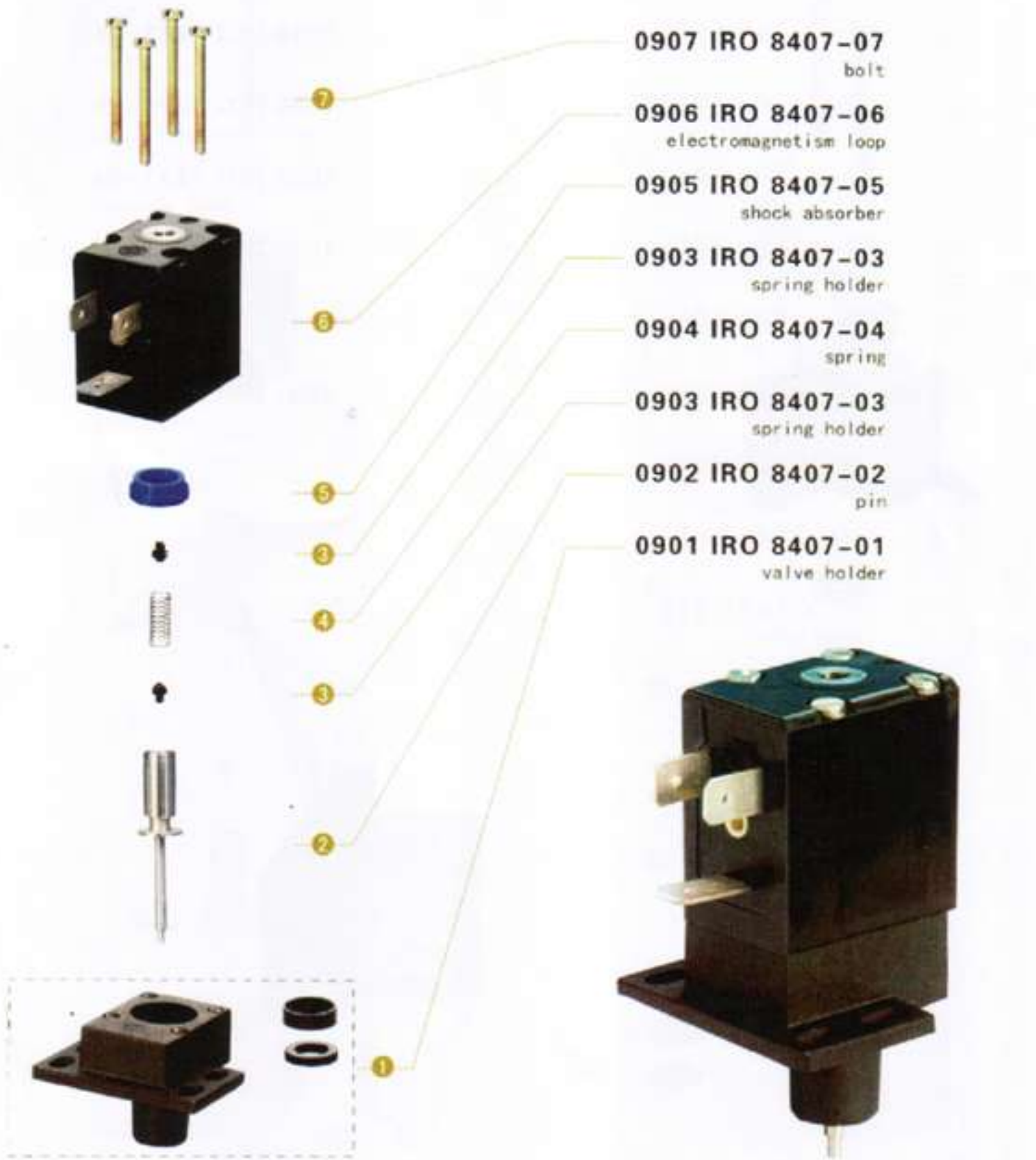
Technology Reference

1. Work medium: dry and no oil pressed air
2. Work condition: -20~+40℃
3. Delicacy: Open time ≤5ms Close time ≤12ms

4. Insulated resistance: >20M
5. Work life: >10亿次

DLZFJ-0900 STORAGE PIN-ASSY

Picanol PAT IRO 8407weft storage pin



Technology Reference

1. Work medium: dry and no oil pressed air
2. Work condition: -20~+40℃
3. Delicacy: Open time ≤6ms Close time ≤12ms

4. Insulated resistance: >20M
5. Work life: >10亿次

DLZFJ-0900 STORAGE PIN-ASSY

Picanol DELTA/OMNI IRO2231 weft storage pin



- 1006 IRO 2231-06
bolt
- 1005 IRO 2231-05
electromagnetism loop
- 1004 IRO 2231-04
shock absorber
- 1003 IRO 2231-03
spring
- 1002 IRO 2231-02
pin
- 1001 IRO 2231-01
valve holder

Technology Reference

1. Work medium: dry and no oil pressed air
2. Work condition: -20~+40℃
3. Delicacy: Open time <6ms Close time <12ms

DLZFJ-1000 VALVE ASSEMBLY

4. Insulated resistance: >20M
5. Work life: >10亿次